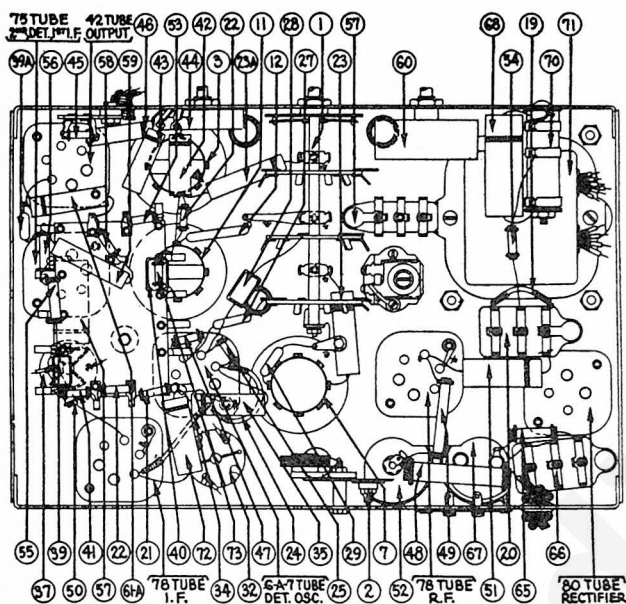




# Replacement Parts—Model 620

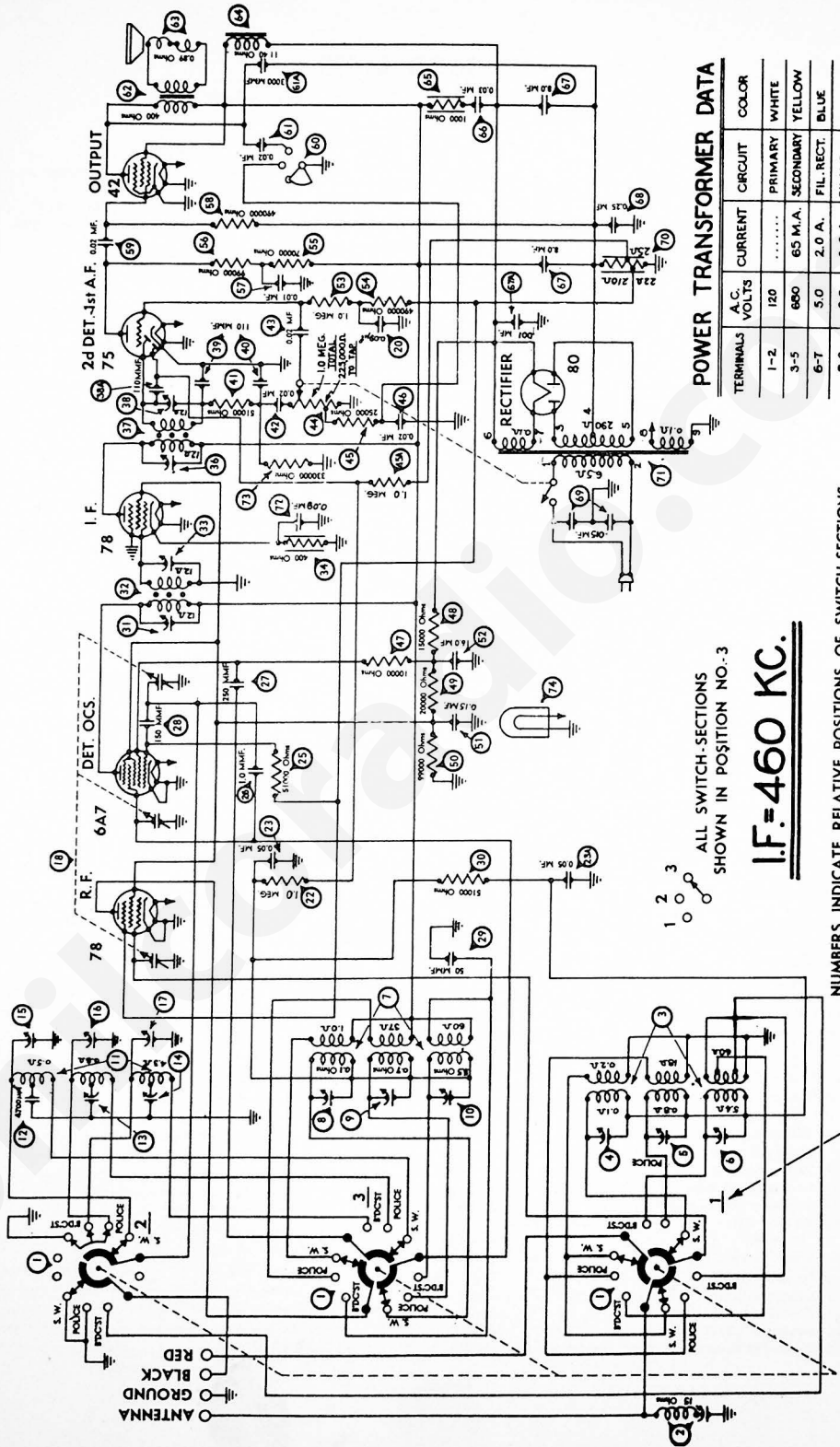


	Description	Part No.
21	Compensating Condenser (1st I.F. Primary).....	Part of 22
22	1st I.F. Transformer.....	32-1646
23	Compensating Condenser (1st I.F. Secondary).....	Part of 22
24	Resistor (400 ohms Flexible) (Yellow, Black, Brown).....	33-3016
25	Condenser (.1 Mfd. Tubular).....	30-4122
26	Compensating Condenser (2nd I.F. Pri.).....	Part of 27
27	2nd I.F. Transformer.....	32-1647
28	Compensating Condenser (2nd I.F. Sec.).....	Part of 27
29	Condenser (.00011 Mfd. Mica).....	30-1031
29A	Condenser (.00011 Mfd. Mica).....	30-1031
30	Condenser (.00011 Mfd. Mica).....	30-1031
31	Resistor (50000 ohms) (Green, Brown, Orange).....	6098
32	Condenser (.02 Mfd. Tubular).....	30-4215
33	Condenser (.02 Mfd. Tubular).....	30-4215
34	Volume Control and On-Off Switch.....	33-5105
35	Resistor (25000 ohms) (Red, Green, Orange).....	33-1013
36	Condenser (.02 Mfd. Tubular).....	30-4215
37	Resistor (10000 ohms) (Brown, Black, Orange).....	4412
38	Resistor (15000 ohms) (Brown, Green, Orange).....	5718
39	Resistor (20000 ohms) (Red, Black, Orange).....	6649
40	Resistor (99000 ohms) (White, White, Yellow).....	4411
41	Condenser (.15 Mfd. Tubular).....	30-4191
42	Condenser (.16 Mfd. Electrolytic).....	30-2118
43	Resistor (1 Meg.) (Brown, Black, Green).....	33-1096
44	Resistor (.5 meg.) (Yellow, White, Yellow).....	6097
45	Resistor (70000 ohms) (Violet, Black, Orange).....	5385
46	Resistor (99000 ohms) (White, White, Yellow).....	6099
47	Condenser (.1 Mfd. Tubular).....	30-4122
48	Resistor (.5 meg.) (Yellow, White, Yellow).....	6097
49	Condenser (.02 Mfd. Tubular).....	30-4113
50	Tone Control.....	30-4316
51	Condenser in Tone Control.....	Part of 50
51A	Condenser (.003 Mfd. Tubular).....	30-6042
52	Output Transformer.....	32-7019
53	Voice Coil & Cone Assembly (S-14 Speaker).....	36-3157
54	Field Coil & Pot Assembly (S-14 Speaker).....	36-3495
55	Resistor (1000 ohms) (Brown, Black, Red).....	5837
56	Condenser (.3 Mfd. Bakelite Block).....	6287-DU
57	Condenser (.8 Mfd. & 8 Mfd. Electrolytic).....	30-2079
58	Condenser (.25 Mfd. Tubular).....	30-4146
59	Condenser (.015 Mfd. Bakelite Block).....	3793-DG
60	Resistor (BC Wirewound, 22 ohms, 235 ohms).....	33-3037
61	Power Transformer (115 Volts 60 Cycles).....	32-7381
62	Power Transformer (115 Volts 25 Cycles).....	32-7382
63	Power Transformer (230 Volts 50 Cycles).....	33-7383
64	Condenser (.1 Mfd. Tubular).....	30-4122
65	Resistor (330,000 ohms) (Orange, Orange, Yellow).....	33-1200
66	Pilot Lamp.....	34-2064
67	Dial Scale.....	27-5098
68	Dial Hub and Set Screw.....	31-1550
69	Dial Front Spring.....	28-2837
70	Knob (Station Selector).....	27-4206
71	Knob (Fine Tuning).....	27-4207
72	Knob (Waveband).....	27-4219
73	Knob (Tone, Volume).....	27-4208
74	Tube Shield.....	28-2726
75	Tube Shield Base.....	28-2725
76	Tube Socket (4 Prong).....	27-6034
77	Tube Socket (6 Prong).....	27-6036
78	Tube Socket (7 Prong).....	27-6037
79	Speaker Plug Socket.....	27-6033
80	Chassis Mtg. Screw.....	W-1495
81	Chassis Mtg. Washer (Rubber).....	27-4198
82	Electric Cord and Plug.....	L-943-A
83	Bezel.....	28-2928
84	Bezel Glass.....	27-7887

	Description	Part No.
1	Waveband Switch.....	42-1107
2	Wavetrap.....	38-6850
3	Antenna Transformer.....	32-1699
4	Compensating Condenser (Ant. S.W.).....	Part of 3
5	Compensating Condenser (Ant. Police).....	Part of 3
6	Compensating Condenser (Ant. Standard).....	Part of 3
7	R. F. Transformer.....	32-1636
8	Compensating Condenser (R.F. Short-Wave).....	Part of 7
9	Compensating Condenser (R.F. Police).....	Part of 7
10	Compensating Condenser (R.F. Standard).....	Part of 7
11	Oscillator Transformer.....	32-1637
12	Condenser (.0047 Mfd. Mica).....	30-1052
13	Compensating Condenser (Osc. Police).....	Part of 11
14	Compensating Condenser (Osc. H.F. Standard).....	Part of 11
15	Compensating Condenser (Osc. S.W.).....	Part of 11
16	Compensating Condenser (Osc. L.F. Police).....	Part of 11
17	Compensating Condenser (Osc. L.F. Standard).....	Part of 11
18	Tuning Condenser Assembly.....	31-1526
19	Resistor (400 ohms Flexible) (Yellow, Black, Brown).....	33-3016
20	Condenser (.09 Mfd. Twin Bakelite Block).....	4989-DG
21	Resistor (.5 Meg.) (Yellow, White, Yellow).....	6097
22	Resistor (2 Megs.) (Red, Black, Green).....	33-1025
23	Condenser (.05 Mfd. Tubular).....	30-4020
24	Condenser (.05 Mfd. Tubular).....	30-4020
25	Resistor (300 ohms Flexible) (Orange, Black, Brown).....	33-3010
26	Resistor (50000 ohms) (Green, Brown, Orange).....	6098
27	Condenser (1 Mmfd.).....	Part of 26
28	Condenser (.00025 Mfd. Mica).....	30-1032
29	Condenser (.00015 Mfd. Mica).....	30-1033
30	Condenser (.00005 Mfd. Mica).....	30-1029
31	Resistor (2 Megs.) (Red, Black, Green).....	33-1025

**MODEL 620**  
(Later Production)



**POWER TRANSFORMER DATA**

TERMINALS	A.C. VOLTS	CURRENT	CIRCUIT	COLOR
1-2	120	.....	PRIMARY	WHITE
3-5	600	65 M.A.	SECONDARY	YELLOW
6-7	5.0	2.0 A.	FIL. RECT.	BLUE
8-9	6.3	2.0 A.	FILAMENTS	BLACK
4	...	.....	CENTER TAP OF 3-5	YELLOW, GREEN TRACER

ALL SWITCH-SECTIONS SHOWN IN POSITION NO.-3

**I.F.=460 KC.**

NUMBERS INDICATE RELATIVE POSITIONS OF SWITCH-SECTIONS FROM FRONT OF CHASSIS.

# MODEL 620

## Later 1935 Production Runs

Beginning with run No. 7 the grid bias arrangement for the 78 R.F. and 6A7 1st detector was changed. A fixed bias from the B.C. resistor is fed through the AVC circuit to the grids of these tubes. The oscillator circuit was changed to series feed to eliminate possibilities of failure at 6.0 mc.

## PARTS LIST

Description	Part No.	Description	Part No.
① Waveband Switch	42-1152	⊕ Resistor (99000 ohms) (White, White, Yellow)	6099
① Wavetrap	38-6850	⊕ Condenser (.15 Mfd. Tubular)	30-4191
① Antenna Transformer	32-1867	⊕ Condenser (16 Mfd. Electrolytic)	30-2118
② Compensating Condenser (Ant. S.W.)	Part of ②	⊕ Resistor (1 Meg.) (Brown, Black, Green)	33-1096
② Compensating Condenser (Ant. Police)	Part of ②	⊕ Resistor (.5 Meg.) (Yellow, White, Yellow)	6097
② Compensating Condenser (Ant. Standard)	Part of ②	⊕ Resistor (70000 ohms) (Violet, Black, Orange)	33-1115
② R. F. Transformer	32-1868	⊕ Resistor (99000 ohms) (White, White, Yellow)	6099
② Compensating Condenser (R.F. Short-Wave)	Part of ②	⊕ Condenser (.09 Mf.)	4989-SG
② Compensating Condenser (R.F. Police)	Part of ②	⊕ Resistor (.5 meg.) (Yellow, White, Yellow)	6097
② Compensating Condenser (R.F. Standard)	Part of ②	⊕ Condenser (.03 Mfd. Bakelite)	8318-SU
③ Oscillator Transformer	32-1869	⊕ Tone Control	30-4316
③ Condenser (.0047 Mfd. Mica)	30-1052	⊕ Condenser in Tone Control	Part of ③
③ Compensating Condenser (Osc. Police)	Part of ③	⊕a Condenser (.003 Mfd. Tubular)	30-4042
③ Compensating Condenser (Osc. H.F. Standard)	Part of ③	⊕ Output Transformer	32-7019
③ Compensating Condenser (Osc. S.W.)	Part of ③	⊕ Voice Coil & Cone Assembly (S-14 Speaker)	36-3157
③ Compensating Condenser (Osc. L.F. Police)	Part of ③	⊕ Field Coil & Pot Assembly (S-14 Speaker)	36-3495
⊕ Compensating Condenser (Osc. L.F. Standard)	Part of 31-6027	⊕ Resistor (1000 ohms) (Brown, Black, Red)	33-1028
	Part of 31-6027	⊕ Condenser (.3 Mfd. Bakelite Block)	6287-DU
⊕ Tuning Condenser Assembly	31-1741	⊕ Condenser (8 Mfd. & 8 Mfd. Electrolytic)	30-2079
⊕ Condenser (.09 Mfd. Twin Bakelite Block)	4989-DG	⊕a Condenser (.001 Mf.)	30-4310
⊕ Resistor (1. Meg.) (Red, Black, Green)	33-1096	⊕ Condenser (.25 Mfd. Tubular)	30-4146
⊕ Condenser (.05 Mfd. Tubular)	30-4020	⊕ Condenser (.015 Mfd. Bakelite Block)	3793-DG
⊕a Condenser (.05 Mfd. Tubular)	30-4020	⊕ Resistor (BC Wirewound, 22 ohms, 25 ohms, 210 ohms)	33-3222
⊕ Resistor (50000 ohms) (Green, Brown, Orange)	6098	⊕ Power Transformer (115 Volts 60 Cycles)	32-7381
⊕ Condenser (1 Mmfd.)	Part of ④	(115 Volts 25 Cycles)	32-7382
⊕ Condenser (.00025 Mfd. Mica)	30-1032	(230 Volts 50 Cycles)	33-7383
⊕ Condenser (.00015 Mfd. Mica)	30-1033	⊕ Condenser (.1 Mfd. Tubular)	Part of ⑤
⊕ Condenser (.00005 Mfd. Mica)	30-1029	⊕ Resistor (330,000 ohms) (Orange, Orange, Yellow)	33-1200
⊕ Resistor (51,000 ohms) (Green, Brown, Orange)	6098	⊕ Pilot Lamp	34-2064
⊕ Compensating Condenser (1st I.F. Primary)	Part of ⑤	Dial Scale	27-5098
⊕ 1st I.F. Transformer	32-1646	Dial Hub and Set Screw	31-1550
⊕ Compensating Condenser (1st I.F. Secondary)	Part of ⑤	Dial Front Spring	28-2837
⊕ Resistor (400 ohms Flexible) (Yellow, Black, Brown)	33-3016	Knob (Station Selector)	27-4206
⊕ Compensating Condenser (2nd I.F. Pri.)	Part of ⑤	Knob (Fine Tuning)	27-4207
⊕ 2nd I.F. Transformer	32-1647	Knob (Waveband)	27-4219
⊕ Compensating Condenser (2nd I.F. Sec.)	Part of ⑤	Knob (Tone, Volume)	27-4208
⊕a Condenser (.00011 Mfd. Mica)	30-1031	Tube Shield	28-2726
⊕ Condenser (.00011 Mfd. (Twin Bakelite)	8035-DG	Tube Shield Base	28-2725
⊕ Condenser (.00011 Mfd. Mica)	Part of ⑤	Tube Socket (4 Prong)	27-6034
⊕ Resistor (50000 ohms) (Green, Brown, Orange)	6098	Tube Socket (6 Prong)	27-6036
⊕ Condenser (.02 Mfd. Tubular)	30-4215	Tube Socket (7 Prong)	27-6037
⊕ Condenser (.02 Mfd. Tubular)	30-4215	Speaker Plug Socket	27-6033
⊕ Volume Control and On-Off Switch	33-5105	Chassis Mtg. Screw	W-1495
⊕ Resistor (25000 ohms) (Red, Green, Orange)	33-1013	Chassis Mtg. Washer (Rubber)	27-4198
⊕a Resistor (1. Meg.) (Brown, Black, Green)	33-1096	Electric Cord and Plug	L-94J-A
⊕ Condenser (.02 Mfd. Tubular)	30-4215	Bezel	28-2928
⊕ Resistor (10000 ohms) (Brown, Black, Orange)	4412	Bezel Glass	27-7887
⊕ Resistor (15000 ohms) (Brown, Green, Orange)	5718		
⊕ Resistor (20000 ohms) (Red, Black, Orange)	6649		